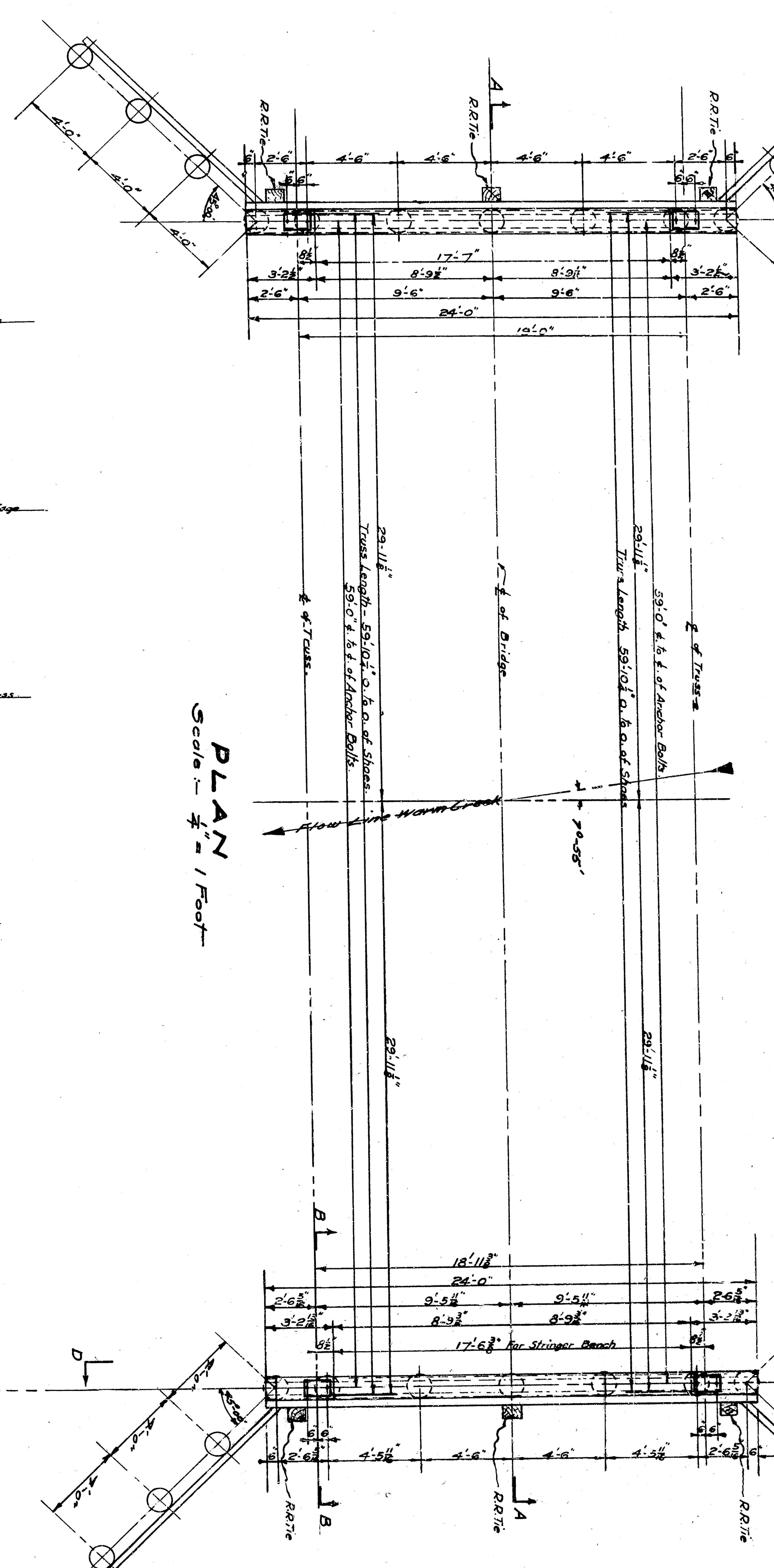
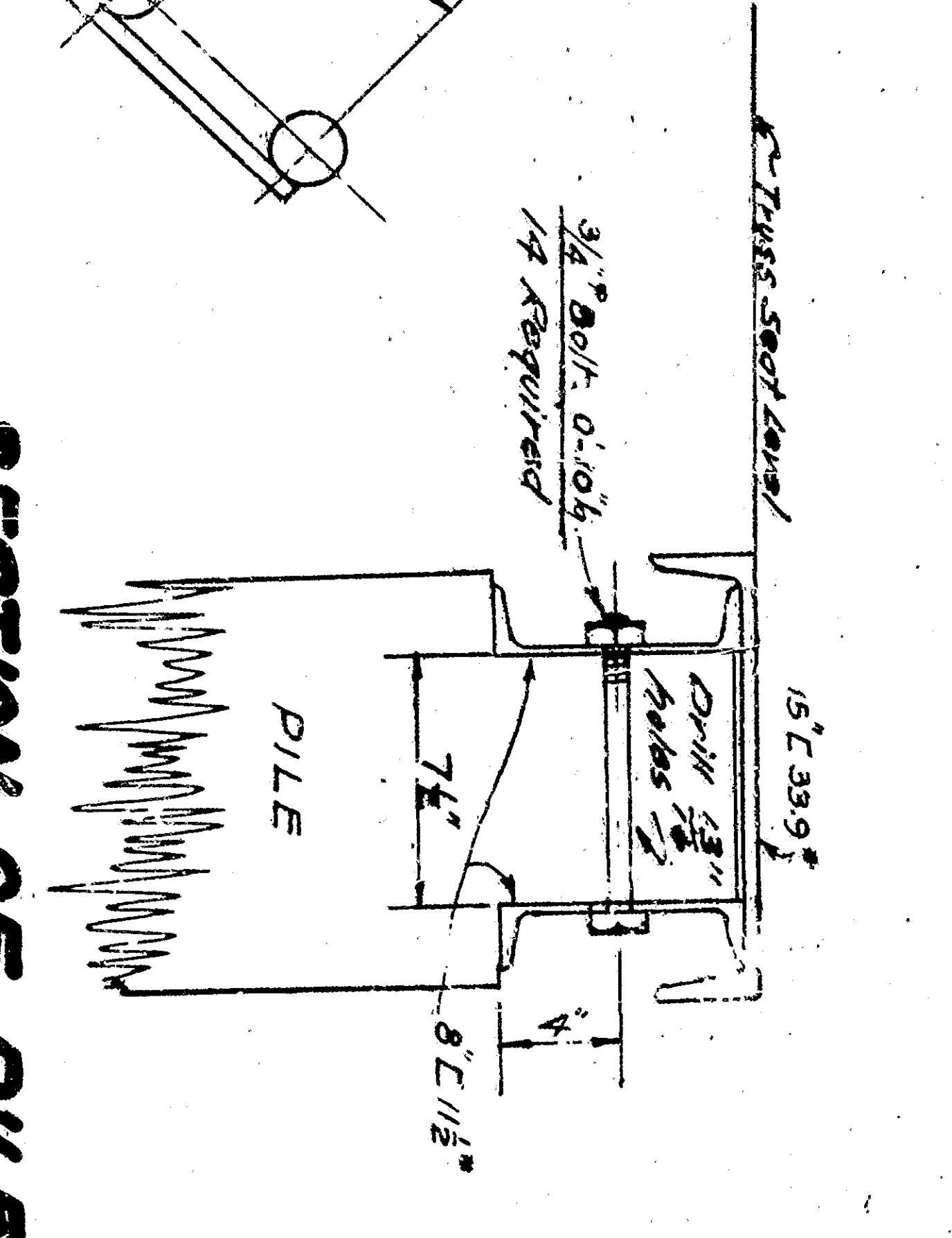


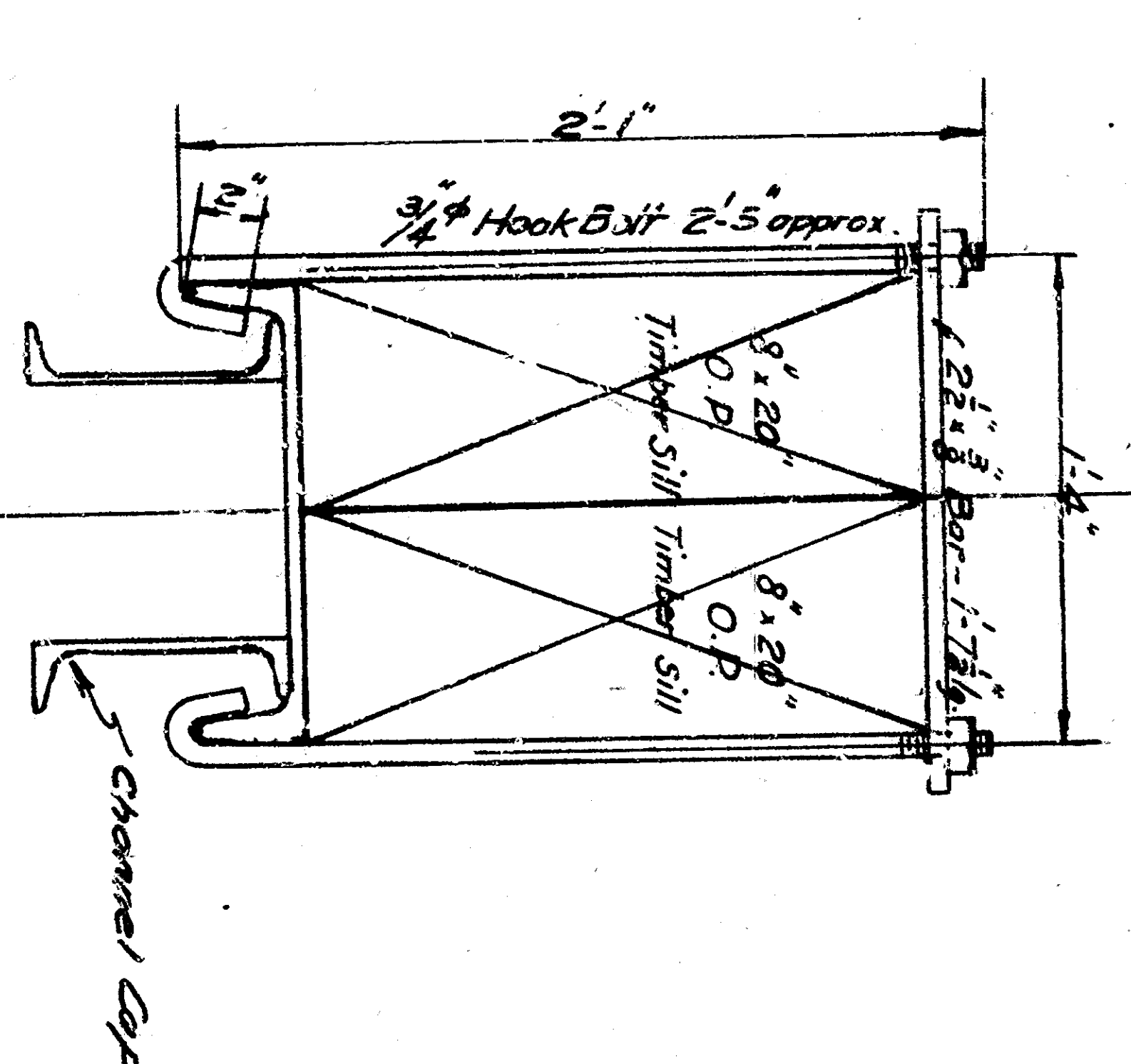
DETAIL OF EXISTING CHANNEL CAPS



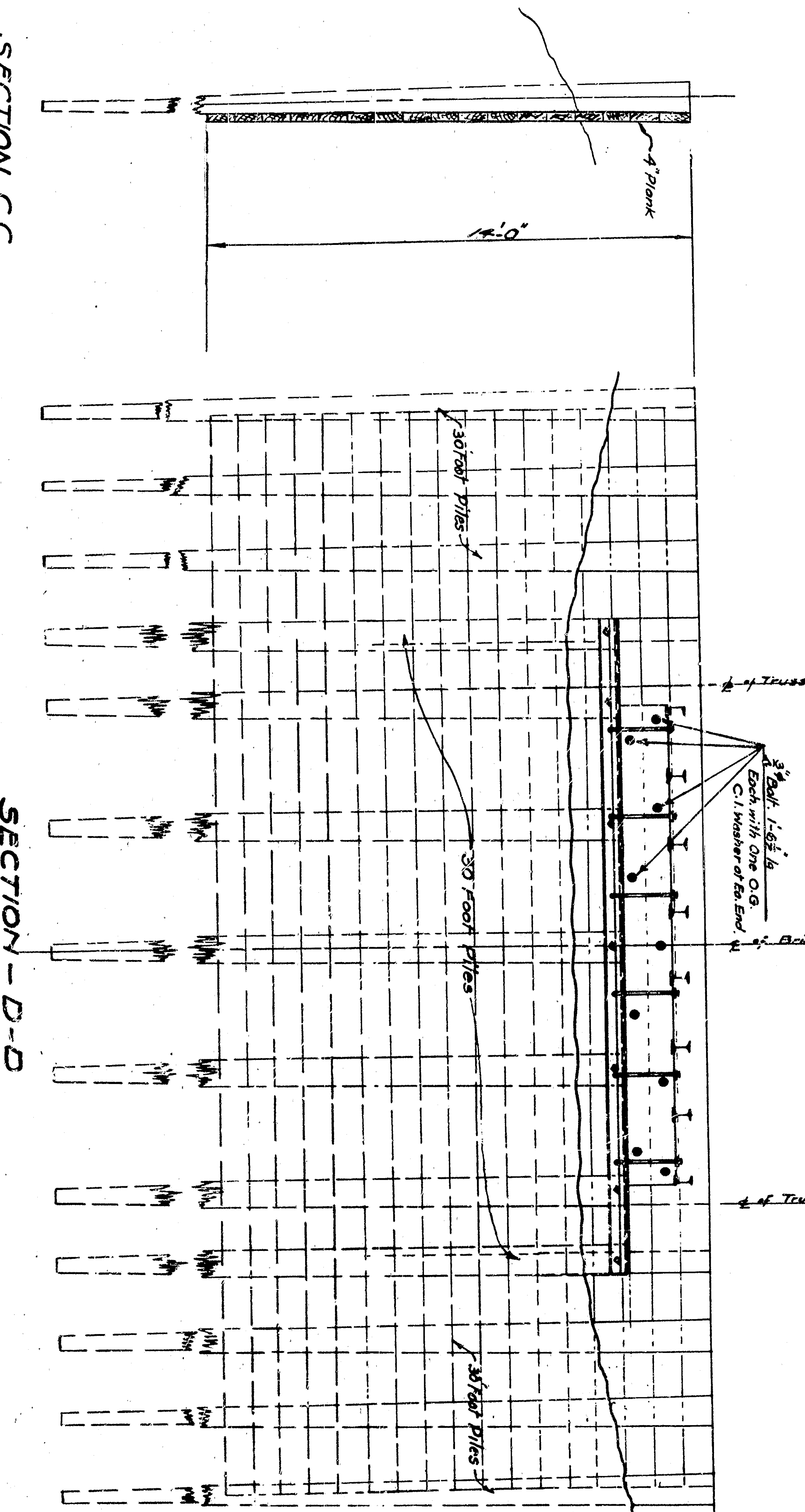
PLAN  
Scale: 1/4" = 1' Foot



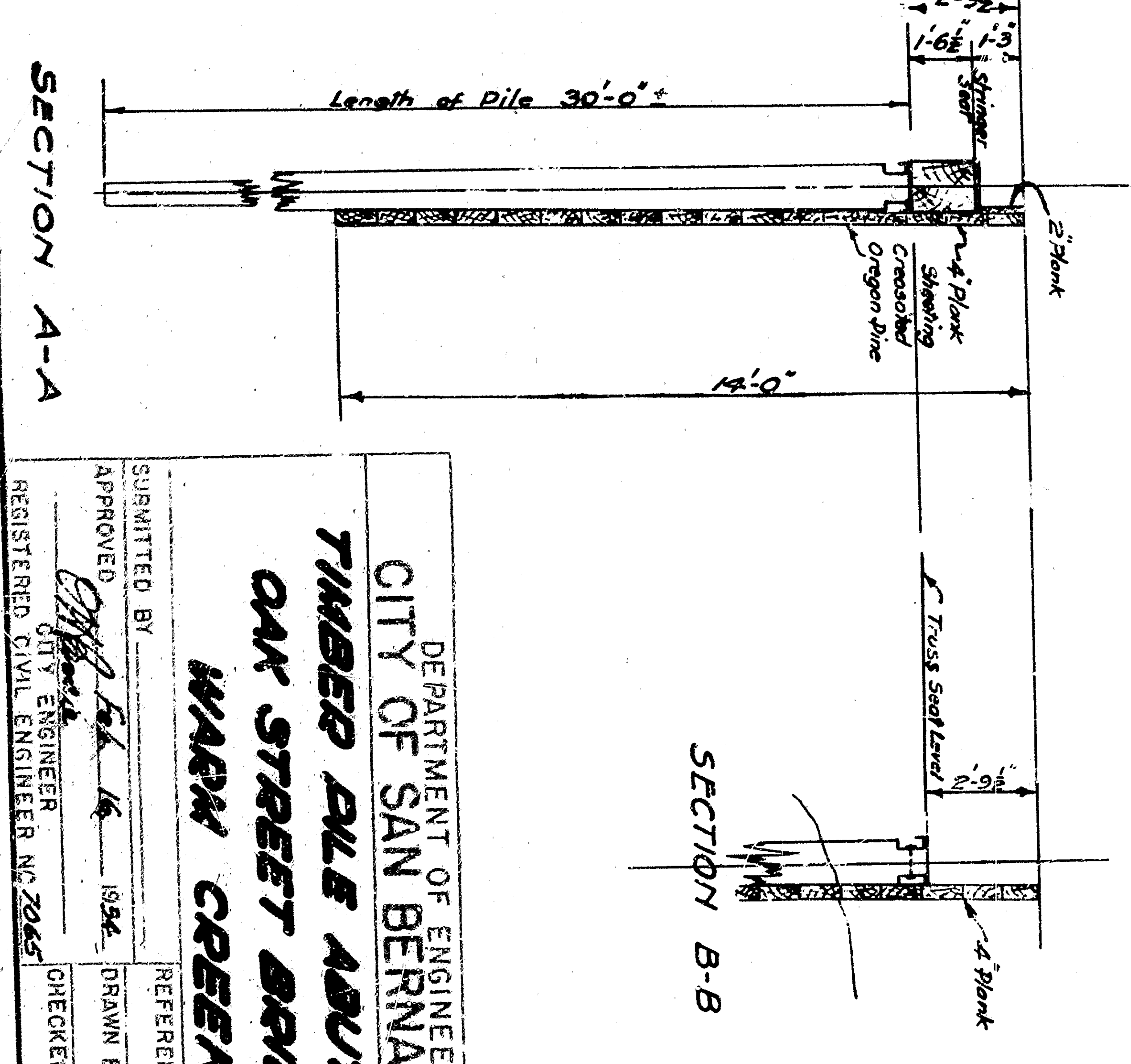
SECTION OF PILE AT CHANNEL CAP



EXISTING FASTENING ASSEMBLY



SECTION C-C



SECTION A-A

DEPARTMENT OF ENGINEERING  
CITY OF SAN BERNARDINO  
TIMBER PILE ABUTMENT  
OAK STREET BRIDGE  
WARM CREEK

SUBMITTED BY: [Signature]  
APPROVED BY: [Signature]  
REGISTERED CIVIL ENGINEER, NO. 2045

REFERENCE: [Signature]  
DRAWN BY: [Signature]  
CHECKED BY: [Signature]  
SHEET 1 OF 2 SHEETS

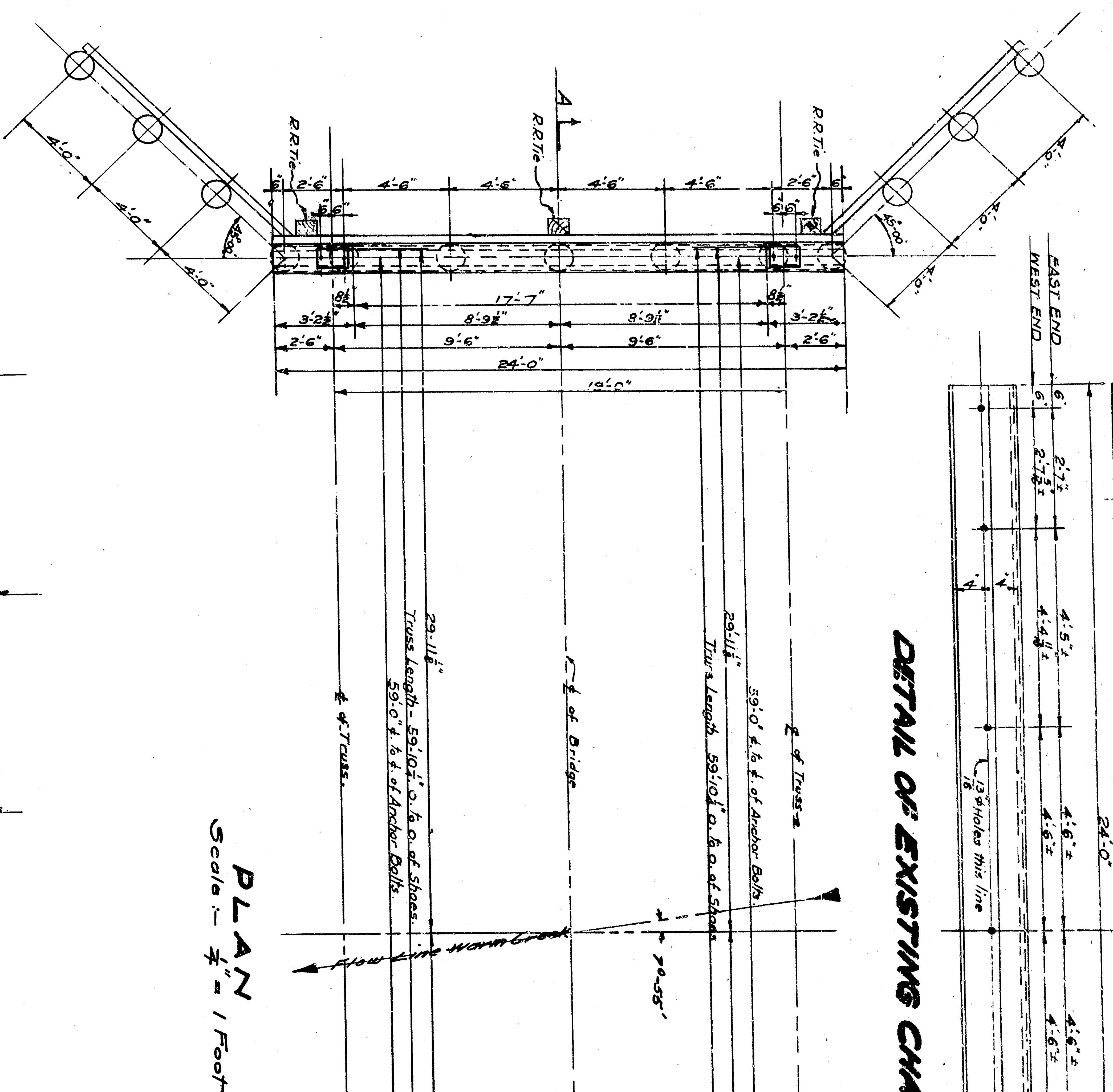
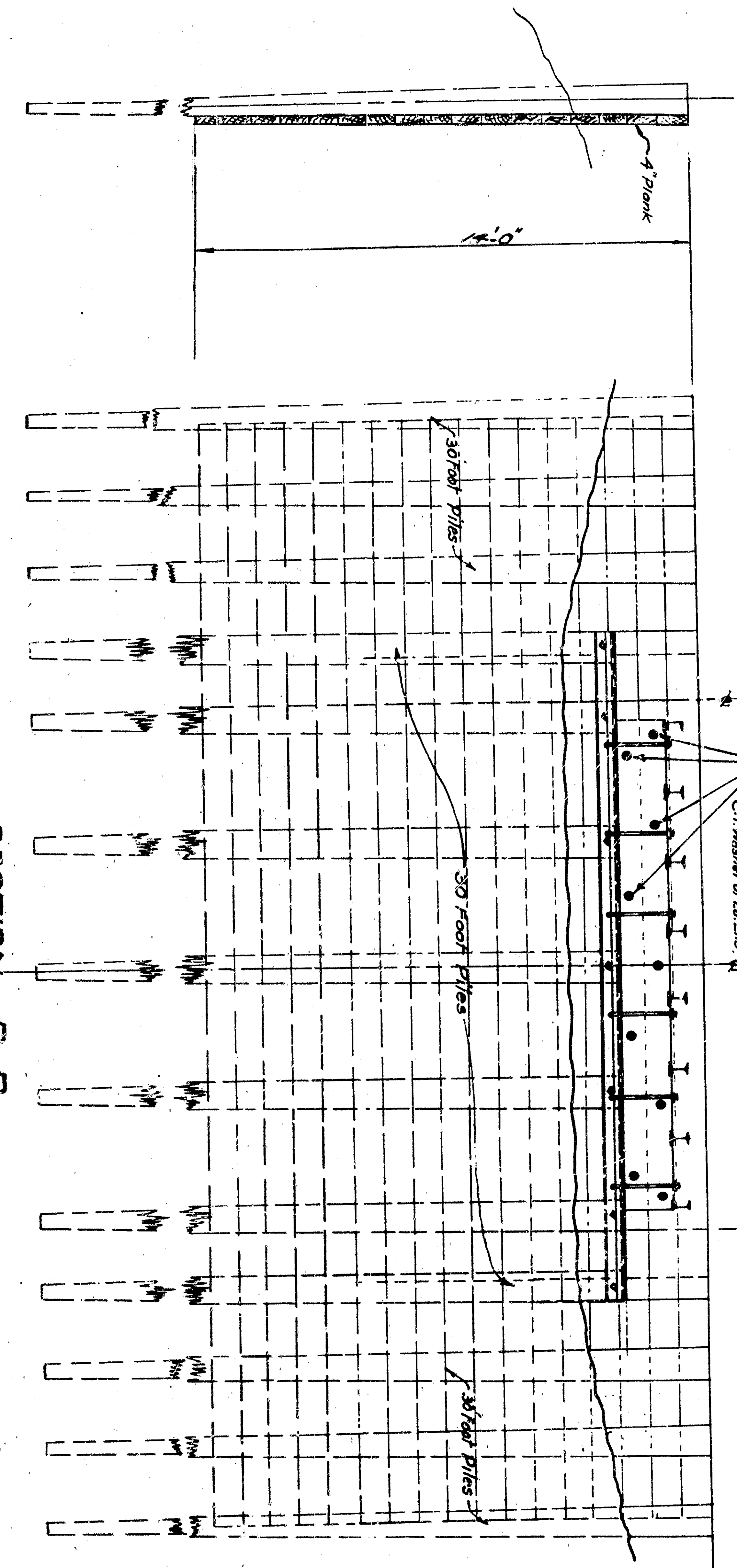
DRAWING NO. E/98

SECTION B-B

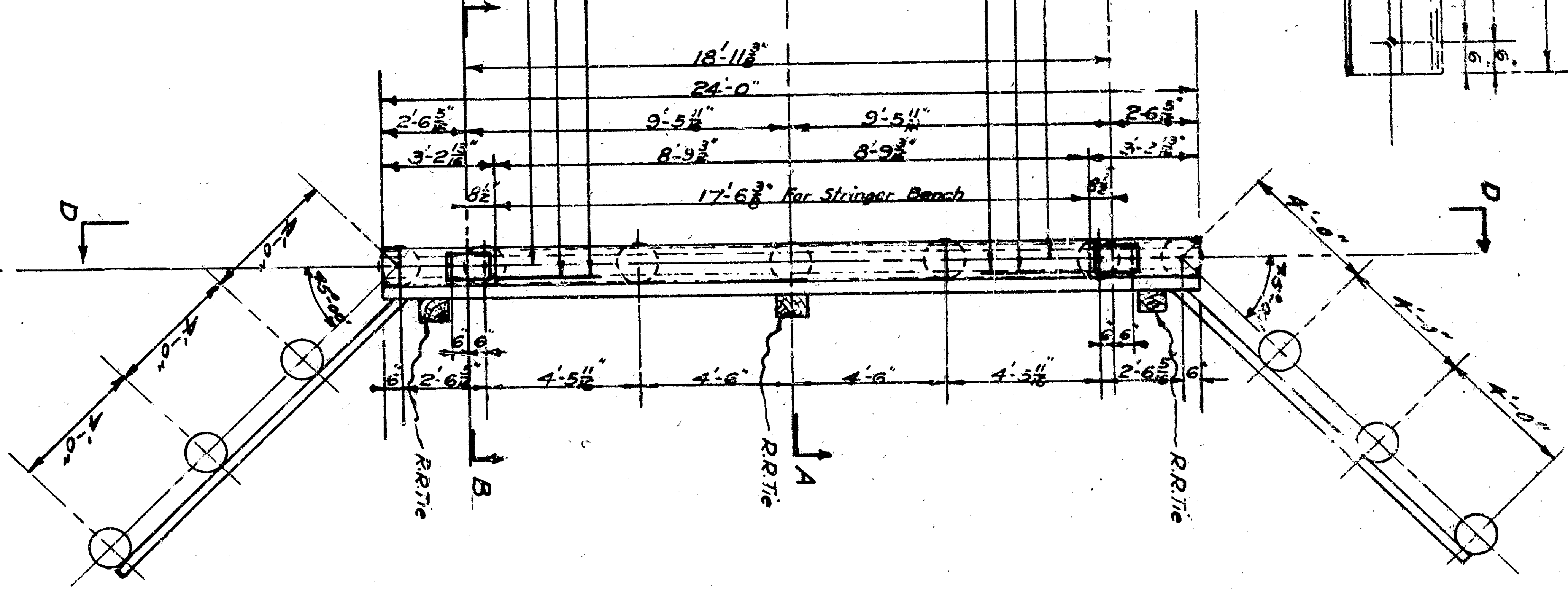
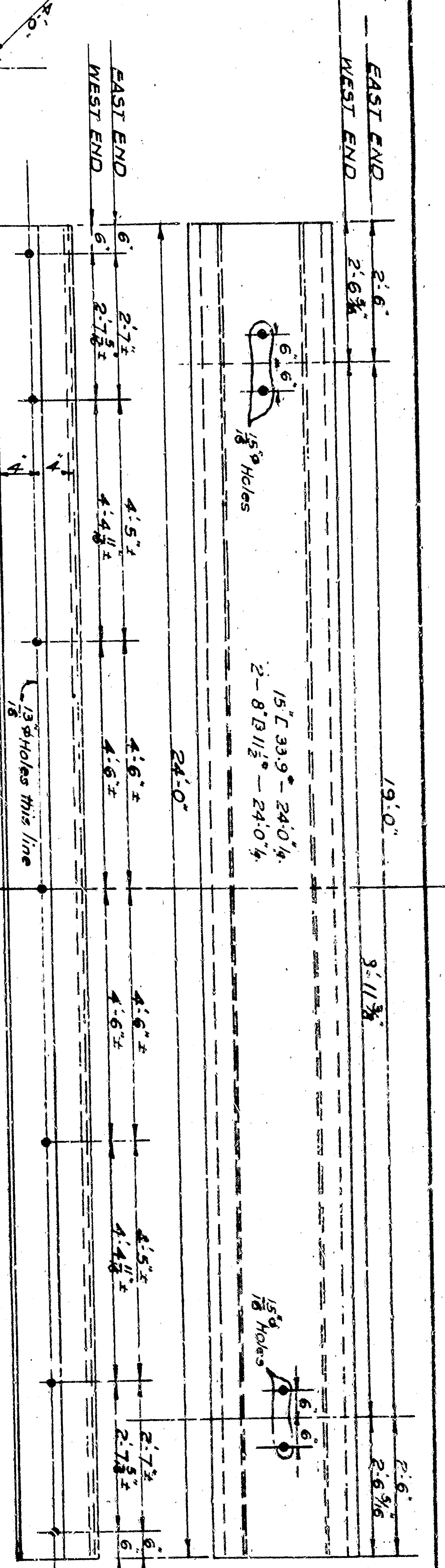


SECTION C-C

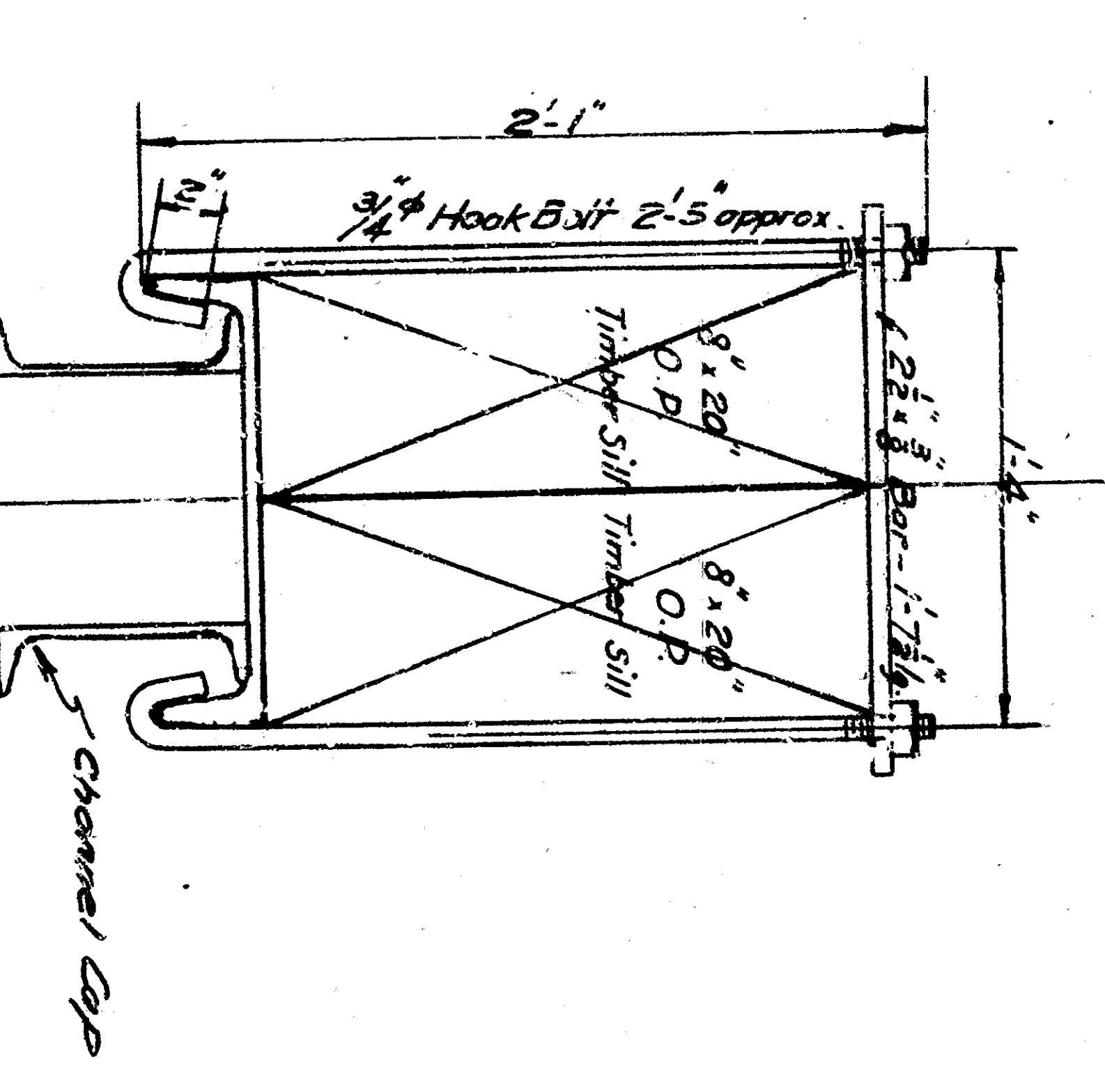
SECTION D-D



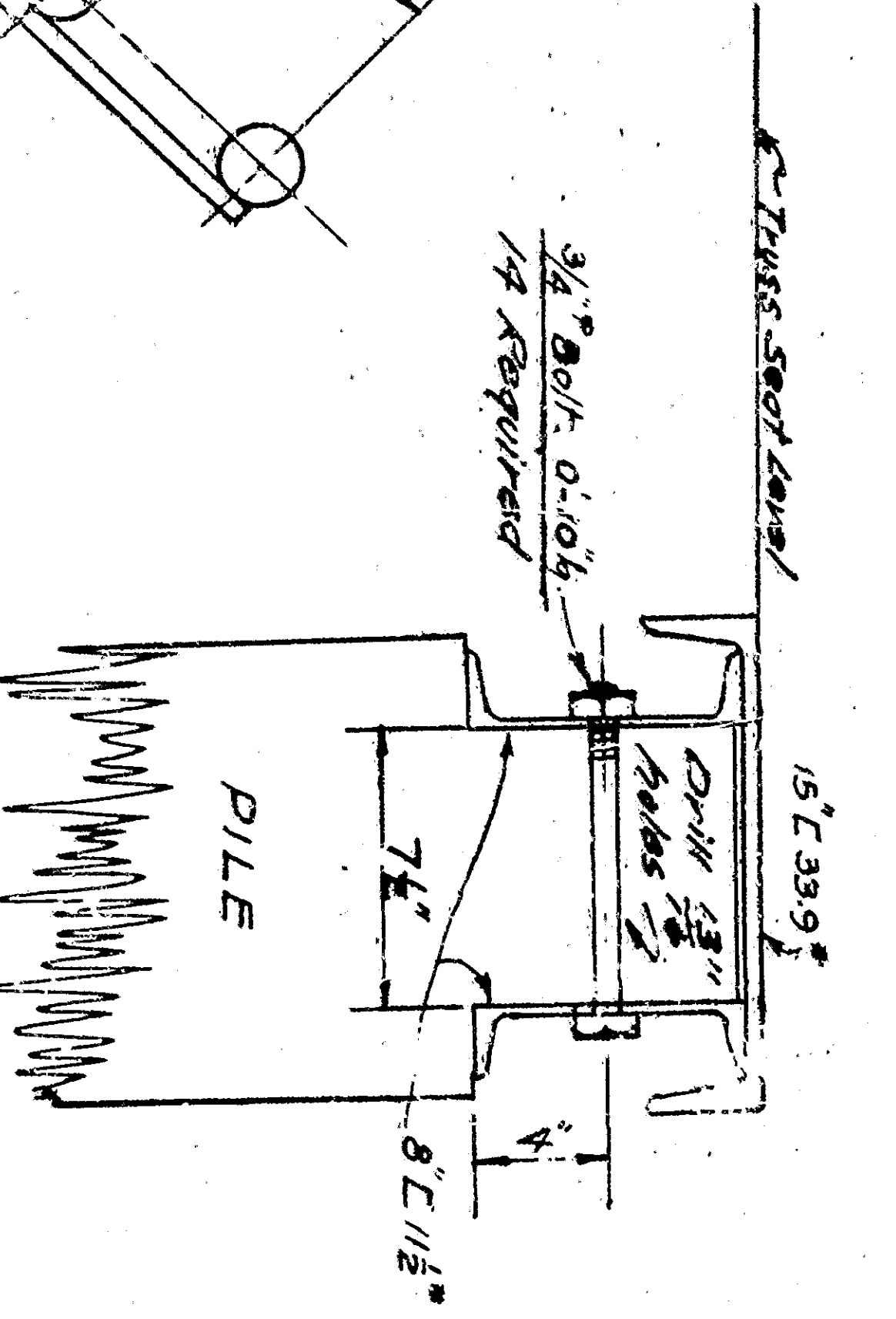
DETAIL OF EXISTING CHANNEL CAPS



EXISTING FASTENING ASSEMBLY



SECTION OF PILE AT CHANNEL CAP



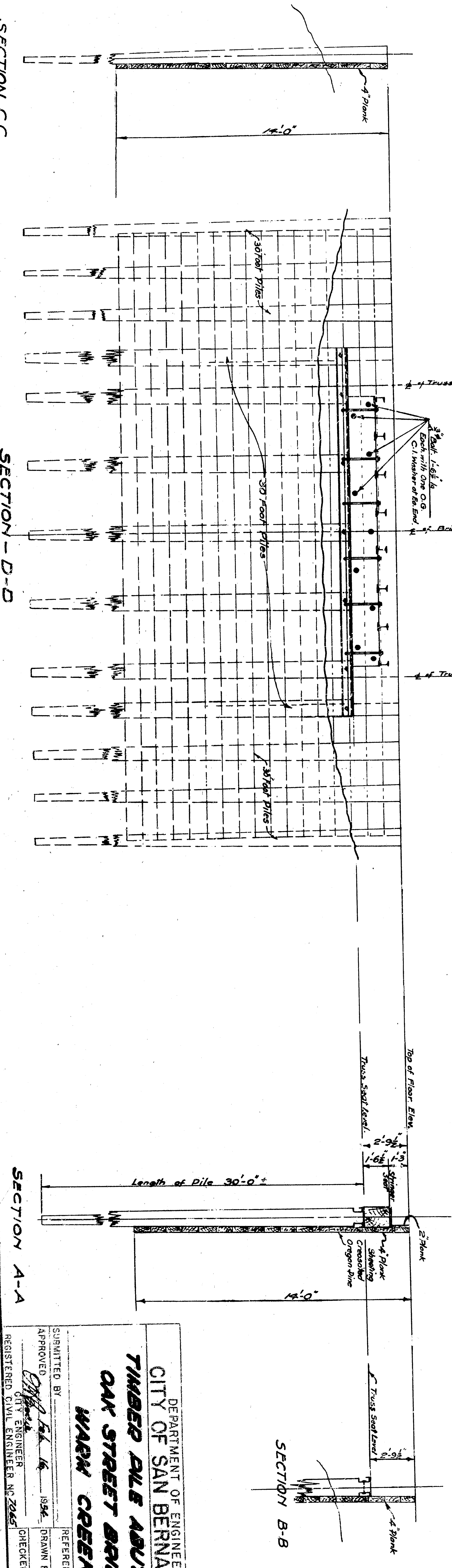
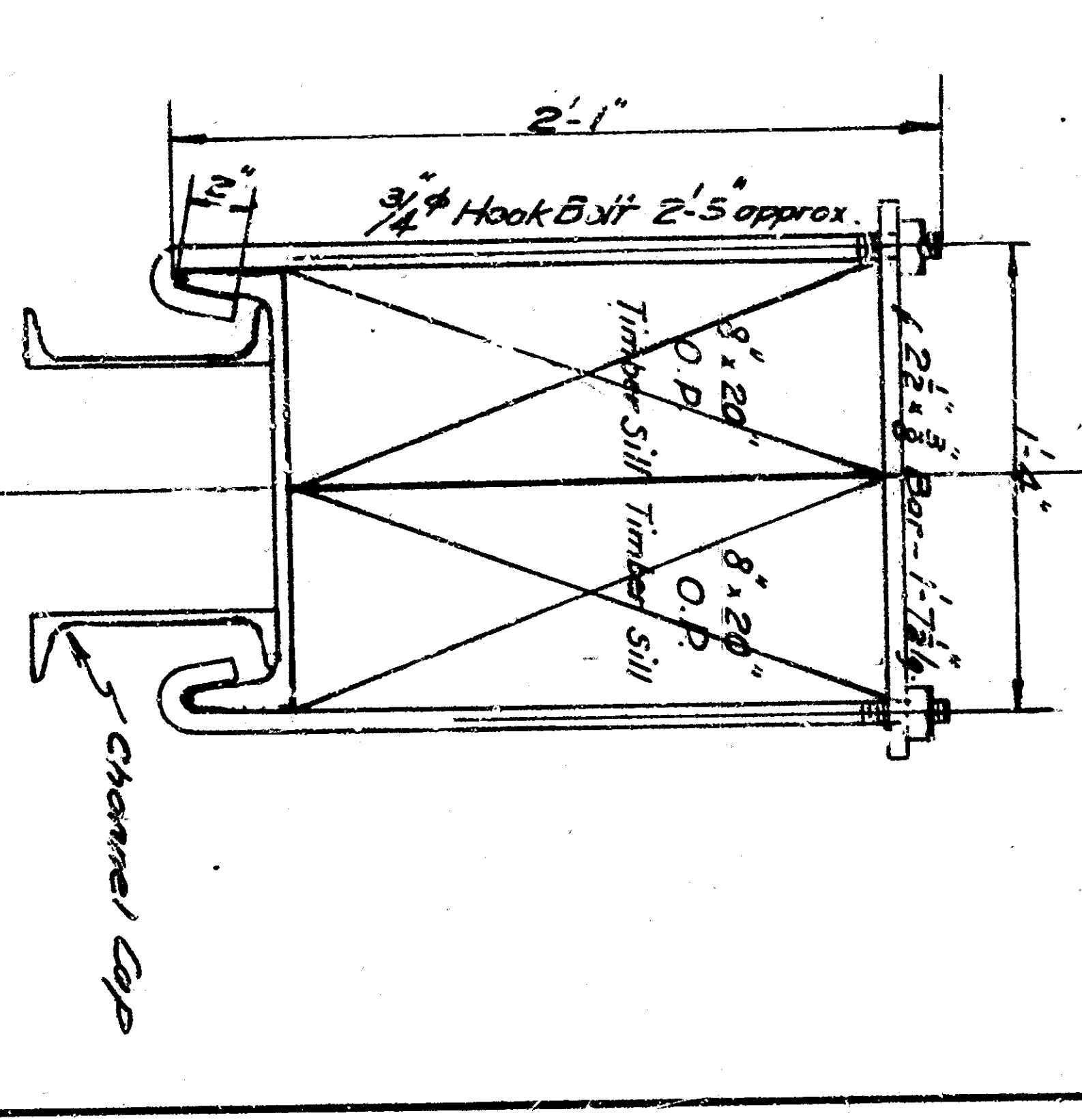
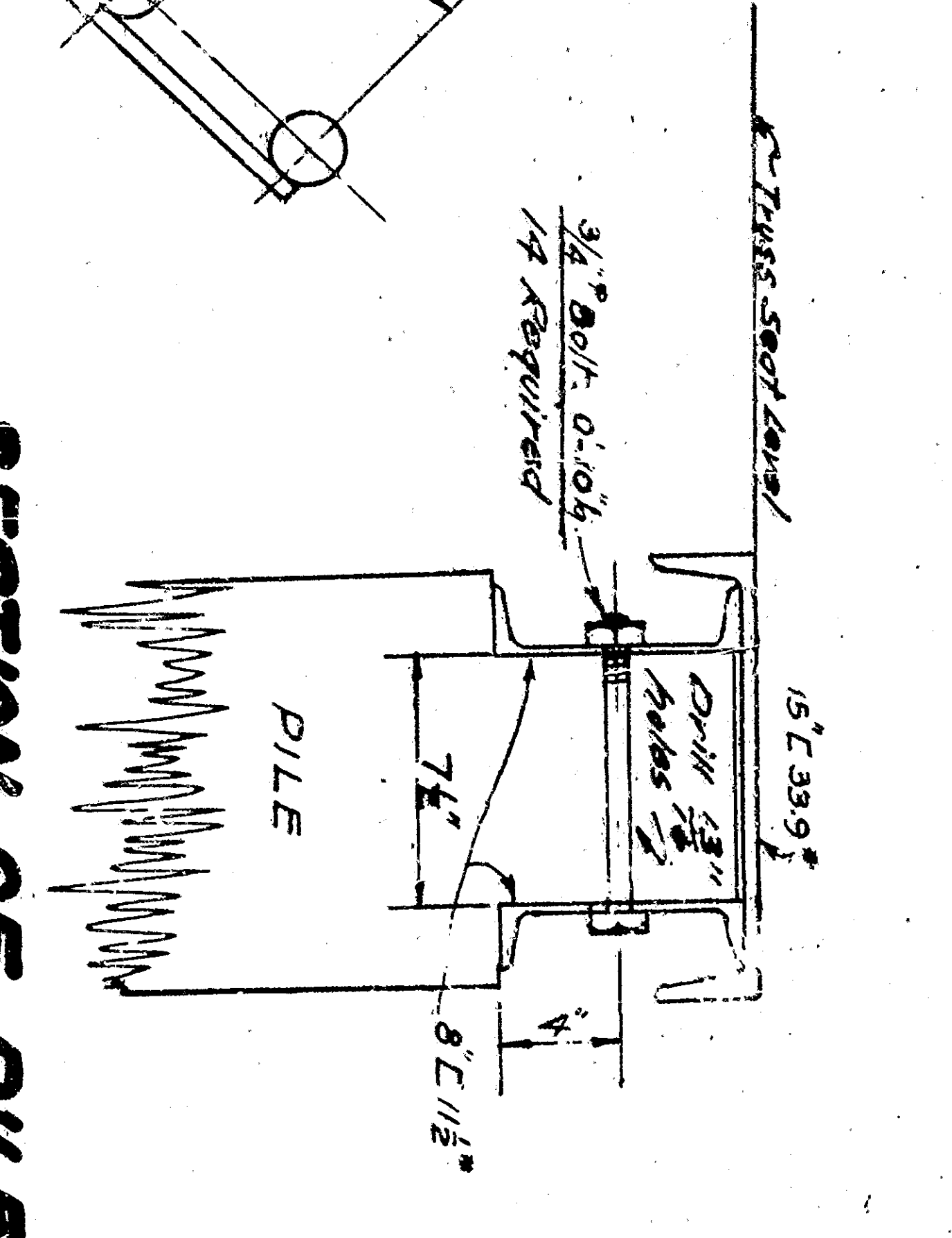
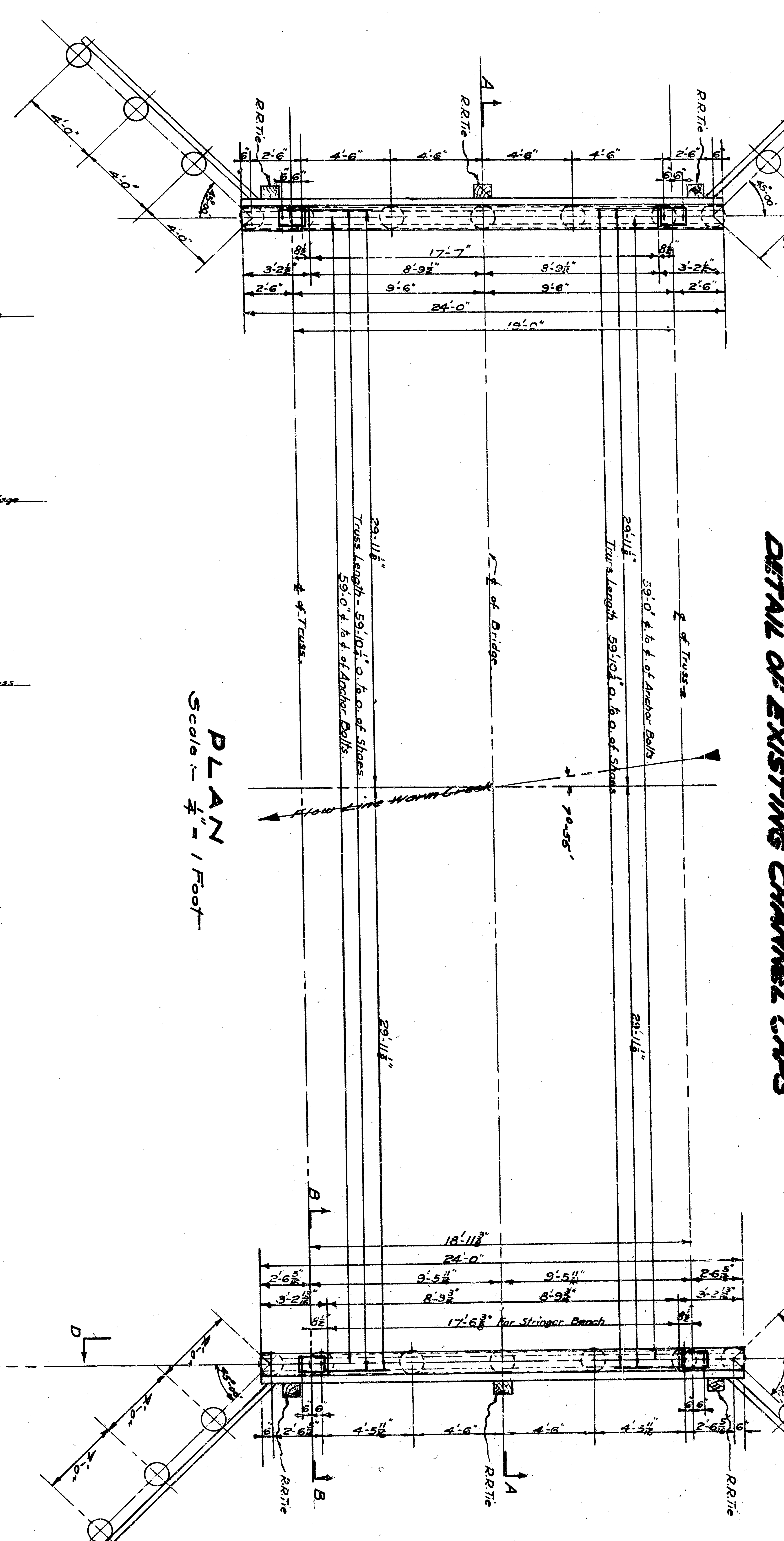
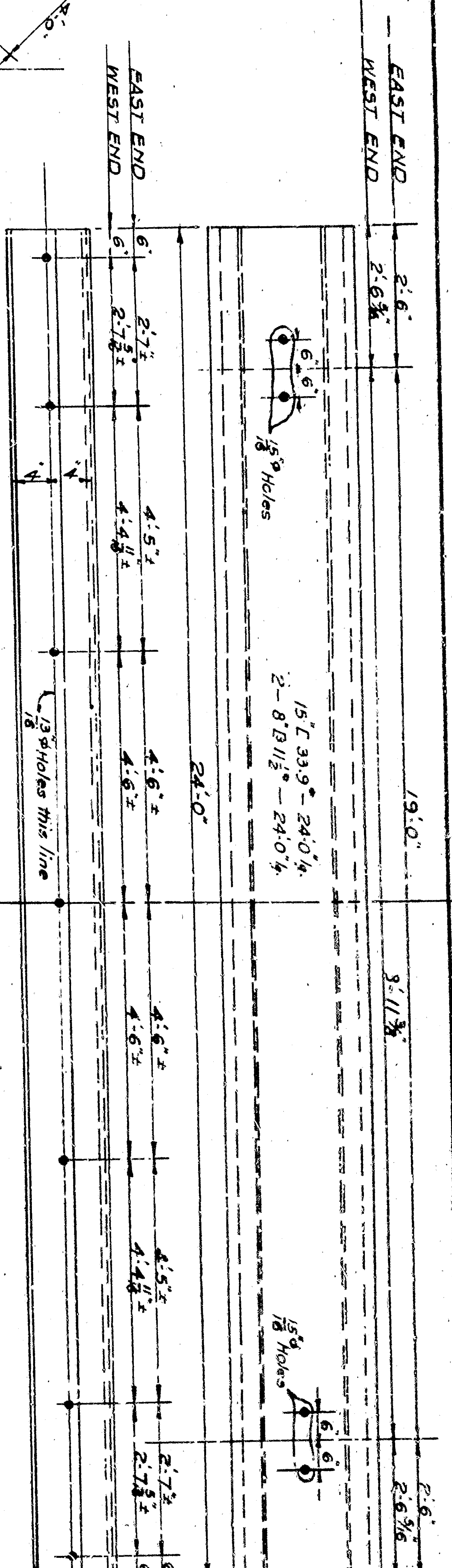
DEPARTMENT OF ENGINEERING  
CITY OF SAN BERNARDINO  
TIMBER PILE ABUTMENT  
OAK STREET BRIDGE  
WARM CREEK

SUBMITTED BY: [Signature]  
APPROVED BY: [Signature]  
REGISTERED CIVIL ENGINEER, NO. 2045

REFERENCE: [Signature]  
DRAWN BY: [Signature]  
CHECKED BY: [Signature]  
DATE: 6/2

DRAWING NO. E/98  
SHEET 1 OF 2 SHEETS





DEPARTMENT OF ENGINEERING  
CITY OF SAN BERNARDINO  
TIMBER PILE ABUTMENT  
OAK STREET BRIDGE  
WARM CREEK

SUBMITTED BY: [Signature]  
APPROVED BY: [Signature]  
REGISTERED CIVIL ENGINEER, NO. 2045

REFERENCE: [Signature]  
DRAWN BY: [Signature]  
CHECKED BY: [Signature]  
SHEET 1 OF 2 SHEETS